

CONTRACTOR	-
PROJECT NAME	GENERAL
LOCATION	-

PRODUCTION	
PROFILE NO.	BR1-A,B,C,D
TOTAL REQUIRED	-
TOTAL POUR DAYS	-
START POUR DATE	-
PRODUCTION STAMP	SIGN

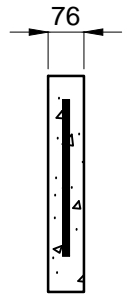
MOLD	
PROFILE NO.	BR1-A,B,C,D
NO OF MOLDS	3
FABRICATION STAMP	SIGN

REBAR LIST					
MARK	SIZE	SHAPE	No.	LENGTH	WEIGHT
BK48-R10-ST-1	10M		1	1119mm	0.9Kg
BK48-R10-BN-2	10M		1	1481mm	1.1Kg

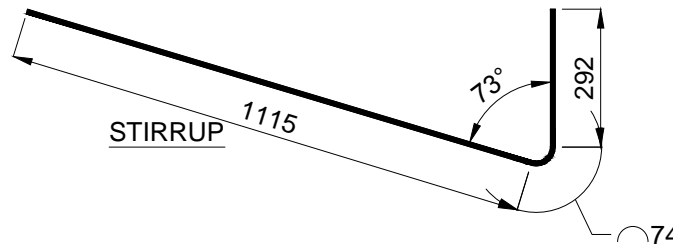
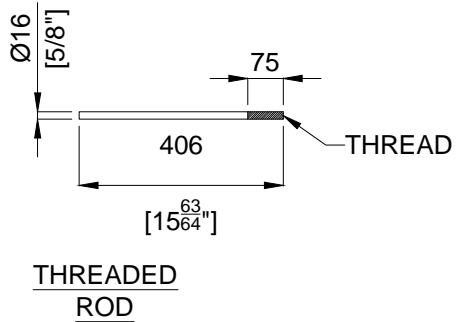
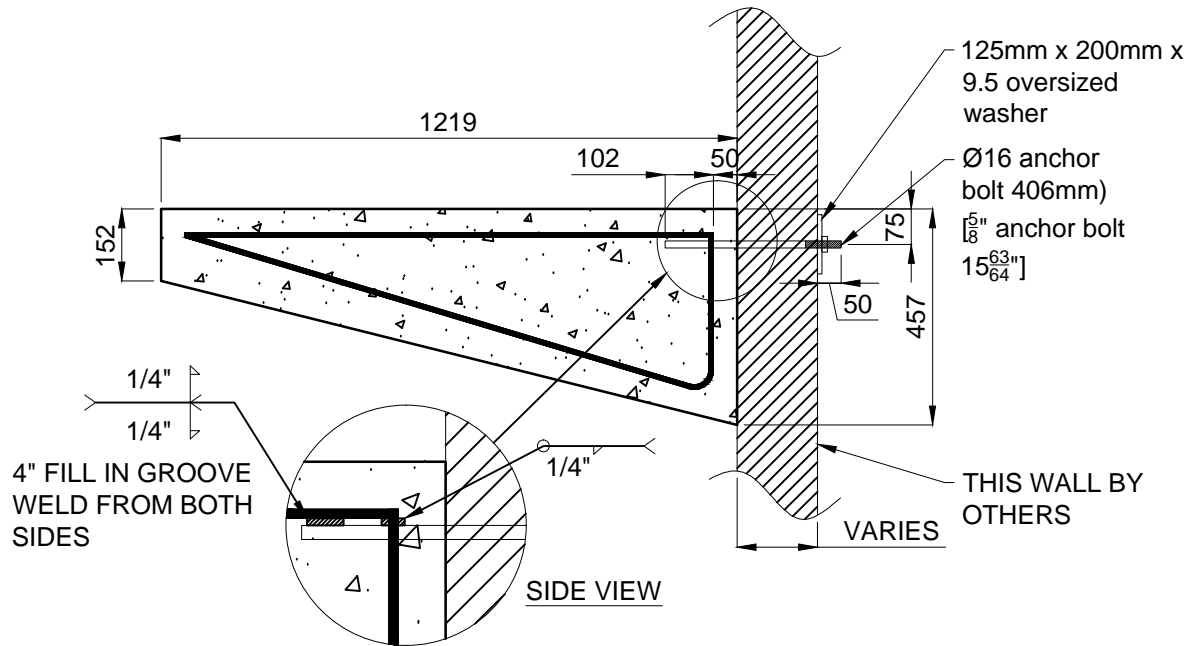
INSERTS LIST		
TYPE	No.	SHAPE
-	-	-

DRAWING No.# BR-48° ST			
FILE No.# BRACKET			
Sales Order No.#			
CONCRETE	Volume (cu.m)	Mass (Kg)	Air Content
	0.028	72	5-7%
STRENGTH	Stripping (MPa)	28-days (MPa)	Rebar Grade
	12	32	400W
FINISH : SMOOTH GREY			

HANDLING INSTRUCTIONS USE FORK LIFT	REVISION NO.#	-
	REVIEWED BY :	-
	DATE :	-
	SCALE :	1:16
SHEET NO.#	1	1
DRAWN BY:	ED	
DATE:	2016-01-27	



FRONT VIEW



CONCRETE NOTES:

- Design, mixing, placing and curing of concrete shall conform to CSA 23.1
- Compressive Strength of concrete 32 MPA at 28 days minimum air content of 4%.
- reinforcing steel to conform to CAN/CSA G30.18, Grade 400R
- Clear cover to main reinforcement is 50mm.
- Anchor Bolts,nuts and washers conform to ASTM A307
- Weld to conform to CSA W59, 2003 comply with the CSA W47.1 Division 2.Use minimum 6mm fillet weld.
- The bracket supporting wall shall be structurally stable and designed by others to capable to withstand the overturning moment from the bracket.
- Any super imposed live load,snow load and dead load on top of bracket should not exceed the maximum load indicated in the table according to the bracket size and length.