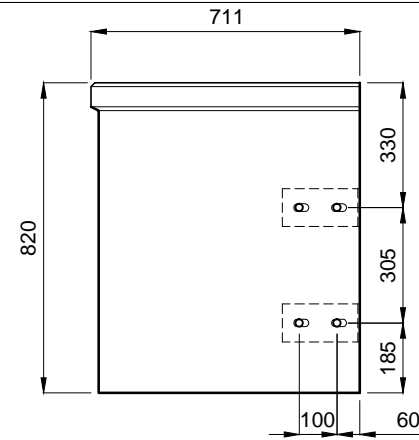
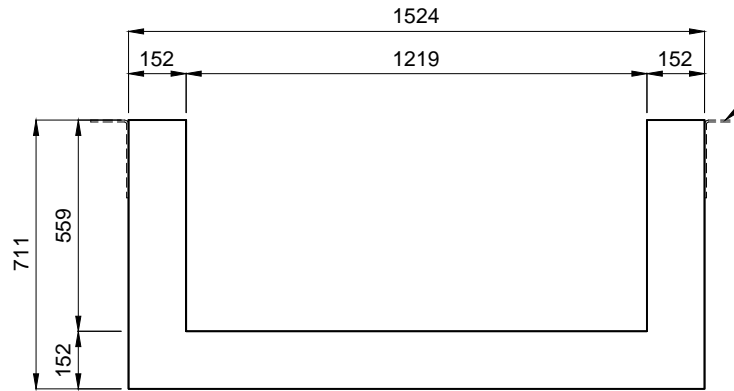


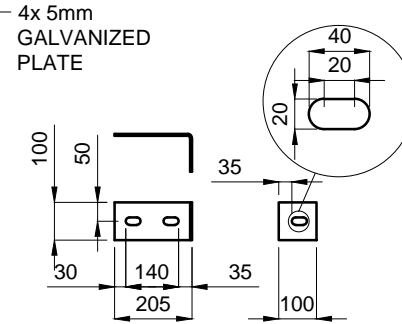
**FRONT VIEW**



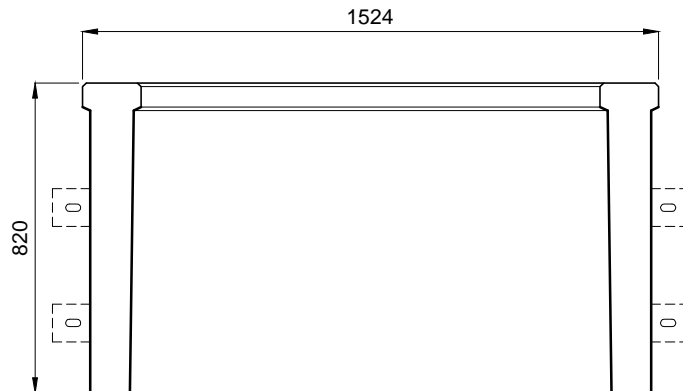
**SIDE VIEW**



**PLAN**



**PLATE**



**BACK VIEW**



11240 199 St., Edmonton, AB T5S 2C6  
 P:780-930-4232 F:780-425-4232  
 www.concreteinc.ca  
 email:info@concreteinc.ca

**NOTES**

IMPERIAL DIMENSIONS 60" x 28" x 32<sup>3</sup>/<sub>2</sub>"  
 METRIC DIMENSIONS 1524mm x 711mm x 820mm

**DRAWING No.#** WW-48

**FILE No.#** WINDOW WELL

**Sales Order No.#** -

CONCRETE	Volume (cu.m)	Mass (Kg)	Air Content
	0.33	838	5-7%
STRENGTH	Stripping (MPa)	28-days (MPa)	Rebar Grade
	12	32	400W

**FINISH** :SANDBLAST, EXP. AGGREGATE, GREY, CHARCOAL, WHITE

**HANDLING INSTRUCTIONS**

Use lifting inserts as indicated in drawing. Lifting chain should be vertical to insert.

Capacity of crane, fork lift, etc. to be 1.5 times dead weight

No swinging or bending while lifting or transportation

**REVISION NO.#** -  
**REVIEWED BY:** -  
**DATE:** -

**SCALE :** 1:20

**SHEET NO.#** 1 of 1

**DRAWN BY:** ED  
**DATE:** 2016-02-11